

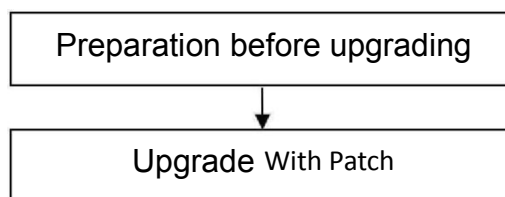
Upgrade Guidance for HD Cameras

This patch is only suitable for HD cameras FI9821P V2, FI9821EP, FI9831P V2, FI9826P V2, FI9821W V2.1, FI9803EP, FI9853EP, FI9851P, FI9831EP, FI9851W, FI9826P V2

Note:

System firmware 1.5.3.13 and application firmware 2.x.2.31, 2.x.2.31_p1 can upgrade with this patch.

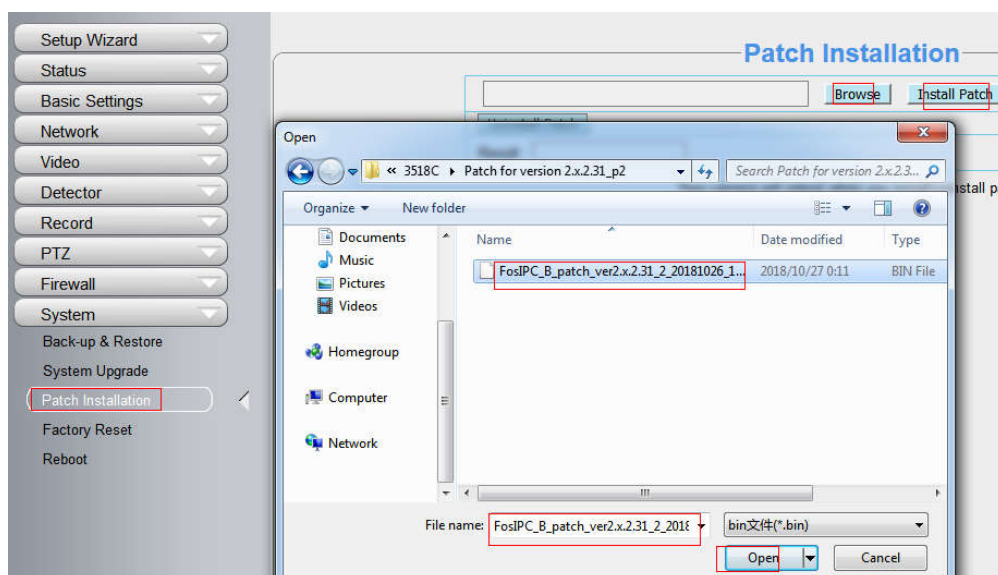
If your camera has other firmware version, please upgrade to the correct firmware version first.



Preparation before upgrading:

1. Please restart your camera before the upgrading;
2. Connect camera to router with an Ethernet cable before upgrading;
3. DO NOT upgrade firmware via wireless;
4. DO NOT upgrade firmware over internet, just finish it in LAN;
5. Keep power on during the upgrading;
6. Logging your camera as administrator first, upgrade firmware on web page.
7. Suggest to unplug SD card before upgrade.

Step: Please log in the camera and go to Settings→System→Patch Installation to upgrade with this patch.



End

--- By Foscam Technical Support Team